

1

2

3

4

A

A

Layer Stack Up

Layer	Name	Material	Thickness	Constant	Board Layer Stack
1	Top Overlay				
2	Top Solder	Solder Resist	0.010mm	3.5	
3	Top Layer	Copper	0.035mm		
4	Dielectric1	FR-4	1.510mm	4.2	
5	Bottom Layer	Copper	0.035mm		
6	Bottom Solder	Solder Resist	0.010mm	3.5	
7	Bottom Overlay				

B

B

Assembly Notes

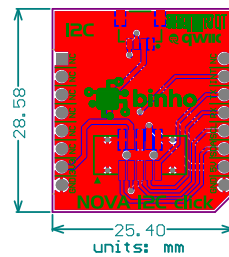
- [1] Material Type: FR-4 or equivalent
- [2] Minimum Hole Size: 0.4mm
- [3] Minimum Trace/Spacing: 6 mil / 6 mil
- [4] Surface Finish: ENIG
- [5] Soldermask Color: Black
- [6] Silkscreen Color: White
- [7] Finished PCB Thickness: 1.6mm nominal
- [8] Controlled Impedance: No
- [9] Must be RoHS Compliant
- [10] 100% Electrical Test

C

C


Component Placement

(mirrored)



D

D

ENGINEER: Jonathan Georgino		
EMAIL: jonathan@binho.io		
DATE: 4/6/2020	PRODUCT: I2C Qwiic/Click Add-On Board	REV: A

1

2

3

4